



What's happening on travel trends - 16/12/2022

Introduction

This log sets out some of the key sources of travel data and sets out some of the key trends.

Department for transport

The Department for Transport (DfT) is currently publishing daily movement data by mode. The full data source is available at the following link:

<https://www.gov.uk/government/statistics/transport-use-during-the-coronavirus-covid-19-pandemic>

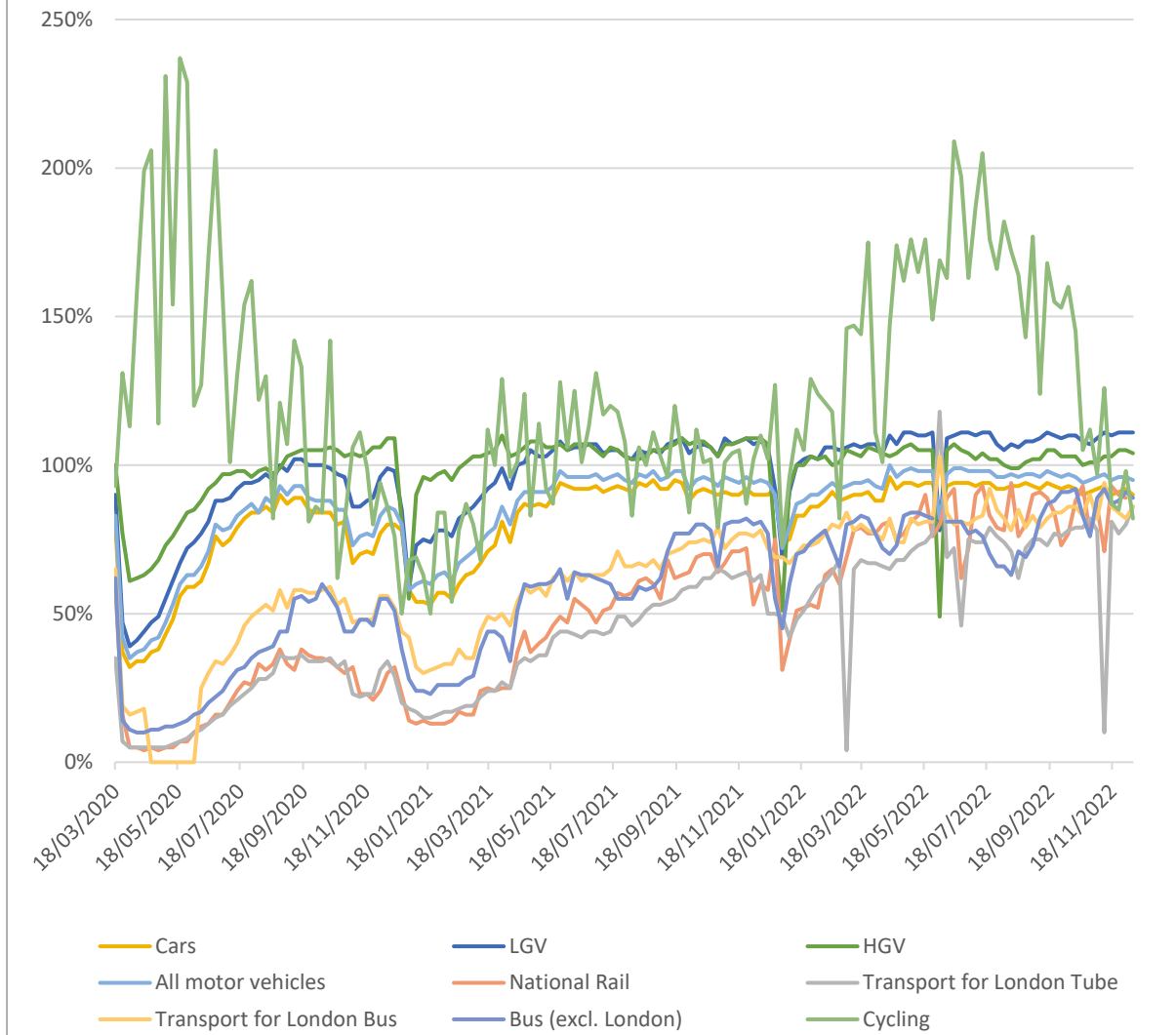
These statistics go back to the 1st of March and provide information on how current travel patterns compare to the pre-Covid rates.

We have collected a snapshot of how trends have changed below, presenting the data for each Wednesday.

The key trends are: (please note that DfT uses a number of different methodologies for its data, which will particularly impact on bus figures through the summer holidays as these compare against the first week in March – a full breakdown of the methodology can be found here: [COVID-19 domestic transport data: methodology note - GOV.UK \(www.gov.uk\)](#)).

- Bus travel has steadily grown back to 90% of pre-Covid levels, the highest levels seen since the initial lockdown.
- Nationally, car travel has remained between 90-93% of pre-Covid levels, with levels remaining stable for a period of time.
- Light rail networks continue to be at variable levels of patronage, largely shaped by local factors.
- Rail travel has seen strong growth back to around 90% of pre-Covid levels, although industrial action continues to impact on the network. Daily figures have been impacted on by strike action.
- Cycling remains the only mode to be consistently above pre-pandemic levels.

Transport usage as a percentage of normal



Date	Cars	LGV	HGV	All motor vehicles	National Rail	Transport for London Tube	Transport for London Bus	Bus (excl. London)	Cycling
10-Nov-22	93%	111%	103%	97%	71%	10%	94%	92%	126%
17-Nov-22	90%	110%	103%	95%	93%	81%	86%	87%	87%
24-Nov-22	91%	111%	105%	96%	90%	77%	84%	88%	85%
01-Dec-22	92%	111%	105%	96%	89%	80%	82%	91%	98%
08-Dec-22	90%	111%	104%	95%	NA	86%	86%	89%	82%

Data from our members

Below is a summary of patronage data compared with last year (ie pre-COVID) and last week.

Please note that the figures are not always strictly comparable given that members can derive their statistics on different basis. The footnotes set out how the figures have been arrived at for each area but in general:

- The bus patronage figures provided by our members can be full patronage or smartcard patronage and they can be either a weekly average or for a specific day
- Light Rail data is all full patronage and for a weekly average.
- Rail data consists of station footfall from either one or a small number of core stations within the region.

Patronage as a percentage of pre-Covid/weekly change

Member	Bus (% of pre-COVID)	Monthly change	Light Rail (% of pre-COVID)	Monthly change	Local Rail (% of pre-COVID)	Monthly change
NEXUS ¹	NA	NA	83	-5	NA	NA
Merseytravel ²	77		NA	NA	81	
SYPTÉ ³	74	-6	82	-5	NA	NA
TfL ⁴	86	0	79	-2	77	-5
TfGM ⁵	84	+1	65	-17	78	+5
TfWM ⁶	86	-1	94	+1	84	+5
WYCA ⁷	59	-4	NA	NA	89	+14

NA = not applicable

footnote	What is the data
1	Light rail figures are a weekly average (W/C 04/12). Bus figures are for early January
2	Figures are a weekly average of smart card transactions compared to the first week of March. Rail data is for gated stations. Latest week ending 04/12
3	Bus patronage is for the main bus operators. Rail patronage is taken from a sample on Northern Rail only. Data to 14/12.
4	Figures are daily entries and exits, with the figure presented from the most recent Tuesday. Tube patronage presented in Light rail column. Data for 15/12

5	Weekly commercial bus patronage, actual Metrolink patronage, and Piccadilly footfall. Figures are for W/E 11/12
6	Data is for Swift Card journeys. Rail Data is taken from 5 key stations. Data for 07/12
7	Bus is a weekly average of smart card transactions. Rail is average weekly footfall at Leeds Station. Data from W/C 05/12.